



**Identifier****NA134A/218**

D570007.13 Lease of Flat 8 CT NA134A/224 issued - produced 22.12.2000 at 3.58 pm and entered 10.1.2001 at 9.00 am (Affects Fee Simple)

D570007.14 Lease of Flat 9 CT NA134A/225 issued - produced 22.12.2000 at 3.58 pm and entered 10.1.2001 at 9.00 am (Affects Fee Simple)

D570007.15 Lease of Flat 10 CT NA134A/226 issued - produced 22.12.2000 at 3.58 pm and entered 10.1.2001 at 9.00 am (Affects Fee Simple)

D570007.16 Lease of Flat 11 CT NA134A/227 issued - produced 22.12.2000 at 3.58 pm and entered 10.1.2001 at 9.00 am (Affects Fee Simple)

D570007.17 Lease of Flat 12 CT NA134A/228 issued - produced 22.12.2000 at 3.58 pm and entered 10.1.2001 at 9.00 am (Affects Fee Simple)

D692710.1 Variation of Lease D570007.6 - 25.3.2002 at 2.35 pm (Affects Fee Simple)

D692710.2 Variation of Lease D570007.7 - 25.3.2002 at 2.35 pm

D692710.3 Variation of Lease D570007.8 - 25.3.2002 at 2.35 pm (Affects Fee Simple)

D692710.4 Variation of Lease D570007.9 - 25.3.2002 at 2.35 pm (Affects Fee Simple)

D692710.5 Variation of Lease D570007.10 - 25.3.2002 at 2.35 pm (Affects Fee Simple)

D692710.6 Variation of Lease D570007.11 - 25.3.2002 at 2.35 pm (Affects Fee Simple)

D692710.7 Variation of Lease D570007.12 - 25.3.2002 at 2.35 pm (Affects Fee Simple)

D692710.8 Variation of Lease D570007.13 - 25.3.2002 at 2.35 pm (Affects Fee Simple)

D692710.9 Variation of Lease D570007.14 - 25.3.2002 at 2.35 pm (Affects Fee Simple)

D692710.10 Variation of Lease D570007.15 - 25.3.2002 at 2.35 pm (Affects Fee Simple)

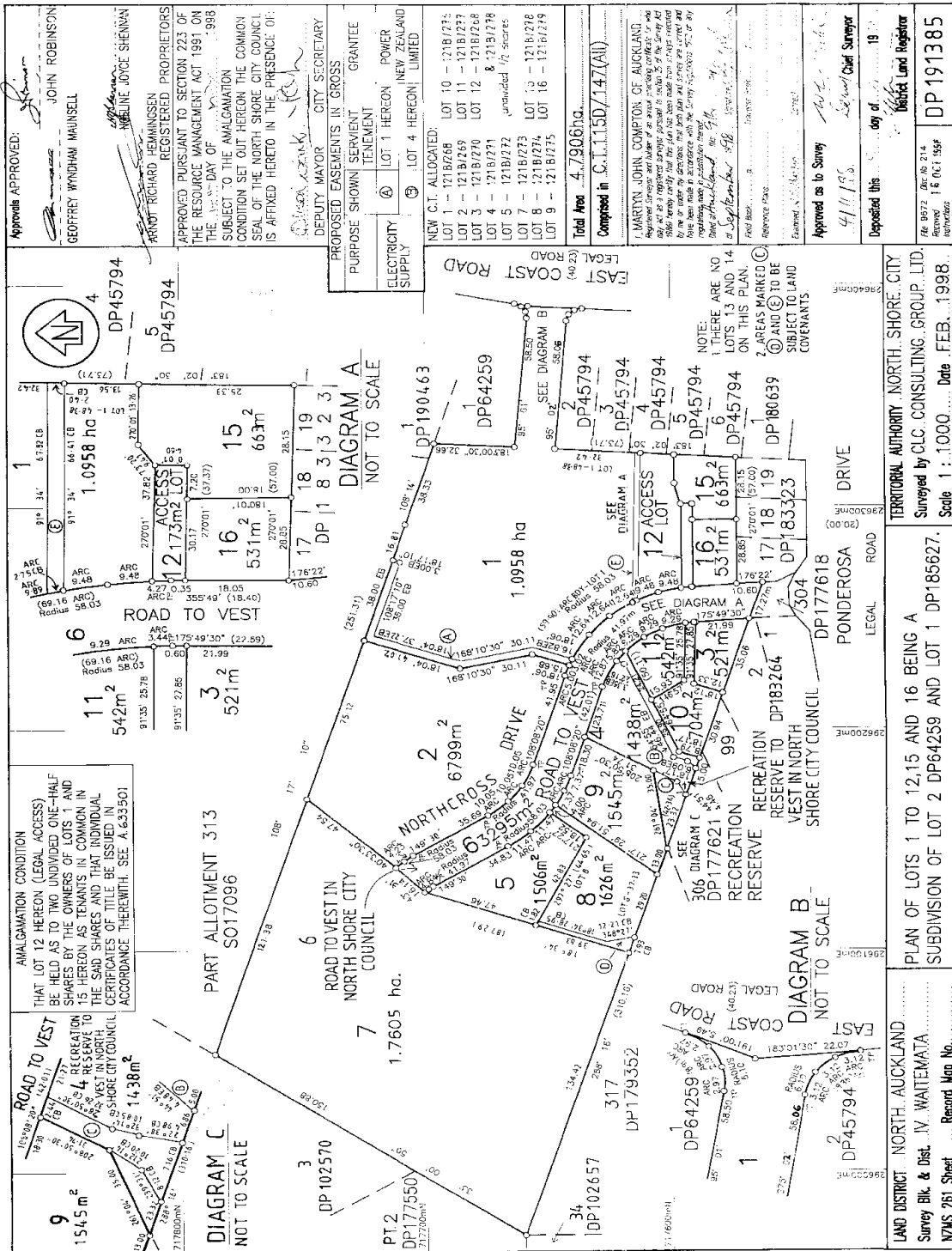
D692710.11 Variation of Lease D570007.16 - 25.3.2002 at 2.35 pm (Affects Fee Simple)

D692710.12 Variation of Lease D570007.17 - 25.3.2002 at 2.35 pm (Affects Fee Simple)

8193693.3 Mortgage to ASB Bank Limited - 15.6.2009 at 12:47 pm







10 NOV 1998

DP 191385

DP 183323

DP 180639

DP 177618

DP 183264

DP 177621

DP 179352

DP 102657

DP 177550

DP 102570

DP 177550

DP 177550

DP 177550